



Peace † Grue

God's Country News
An ELCA Parish

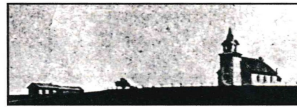


SEPTEMBER 2024

Inside this issue:

Pastoral from the Pastor	2
Sept. Readings, Acolytes, Confirmation	3
Birthdays, Bible Study	4
Peace & Grue Sunday School	5
GRUE WELCA News	6
PEACE WELCA News	7
Peace Quilt Raffle	8
NexTrex Recycling challenge	9
Peace Council Minutes	10
Grue Council Minutes	11
Parish Council Minutes	12
Worship Committee	13
Grue 150th	14
Grue History Tidbits	15
Word Search	16
Coloring & Address	
Update form	17
Sept. Servers & Calendar	18-19

Grue Lutheran Church 1874 ~ 2024



150 Years Strong

Sept. 22, 2024

Join us for

Fellowship - 9 am

Service - 10:45 am

Dinner after services



September thru
December

Peace 9:00 a.m.
Grue 10:45 a.m.



ATTENTION SUNDAY SCHOOL
GRUE STARTS SEPTEMBER 15TH
PEACE STARTS OCTOBER 6TH
YOUTH AND PARENTS





Pastoral from the Pastor

Dear friends in Christ at Peace and Grue,

“I must still read and study the Catechism daily, yet I cannot master it as I wish but must remain a child and pupil of the Catechism, and I do it gladly.” -Martin Luther

As I began thinking about this year’s confirmation class, I was reminded of Luther’s statement. The notion that it is important to get back to the basics is nothing new for Christians. A catechism is simply a guide for people in need of instruction—novices and veterans, the young and the old alike—in the fundamentals of the Christian faith.

Among Lutherans, the best known of these summaries of the Christian faith is the Small Catechism. As the events of the Protestant Reformation shook the Western Christian church to its foundations, Luther was quickly convinced of the need for a new catechism. He asked trusted colleagues to take on this project, and they agreed, but then lingered, putting it on the back burner. After his tour to inspect the churches of his German province, in which he was appalled by the ignorance of both the people and the pastors, Luther could wait no longer.

With characteristic energy and enthusiasm, Luther quickly prepared not one but two quite different catechisms simultaneously. The longer of the two was written for pastors as a teacher’s guide to the Christian faith. The other one, the one we know as the Small Catechism was written to be used by everyone as a basis for instruction, discussion, and worship in their own homes. In time, this cherished work became one of the official documents of the Lutheran churches.

As a Lutheran statement of faith, the Small Catechism has been used in a variety of ways. The best known is the preparation of young people for confirmation, sometimes called Affirmation of Baptism, in which they make public profession of their faith. It would, however, greatly sadden Luther to think that this association with confirmation has limited its use to the classroom, and young people, rather than around the kitchen table by fathers and mothers as well as children.

Like its author, the Small Catechism is intent on spreading the gospel. Its sole purpose is to create trust in God and God’s Word at the core of the Christian faith. As such, Luther often said that no one outgrows the need to study the Catechism. Luther wrote of himself, “I do as a child who is being taught the Catechism. Every morning, and whenever else I have time, I read and recite word for word the Lord’s Prayer, the Ten Commandments, the Creed, the Psalms, etc....” (BC 359.7-8).

In this spirit and in solidarity with our confirmands, I will over the next few months use my newsletter article to comment on the chief parts of the catechism. If you still have your catechisms, I encourage you, if necessary, to dig it out, dust it off, and get reacquainted with an old friend. If you have misplaced yours or don’t have one, let us know and the church will be happy to give you one.

In Christ,

Pastor Dan

Readings for the Month of September

September 1 <u>First Reading</u> Deuteronomy 4:1-2, 6-9 <u>Psalm</u> Psalm 15 <u>2nd Reading</u> James 1:17-27 <u>Gospel</u> Mark 7:1-8, 14-15, 21-23	September 8 <u>First Reading</u> Isaiah 35:4-7a <u>Psalm</u> Psalm 146 <u>2nd Reading</u> James 2:1-10 [11-13] 14-17 <u>Gospel</u> Mark 7:24-37	September 15 <u>First Reading</u> Isaiah 50:4-9a <u>Psalm</u> Psalm 116:1-9 <u>2nd Reading</u> James 3:1-12 <u>Gospel</u> Mark 8:27-38	September 22 <u>First Reading</u> Jeremiah 11:18-20 <u>Psalm</u> Psalm 54 <u>2nd Reading</u> James 3:13/4:3, 7-8a <u>Gospel</u> Mark 9:30-37	September 29 <u>First Reading</u> Numbers 11:4-6, 10-16, 24-29 <u>Psalm</u> Psalm 19:7-14 <u>2nd Reading</u> James 5:13-20 <u>Gospel</u> Mark 9:38-50
---	---	---	---	--



September 2024

9:00 am Worship

8 th - Coffee Cup Sunday

15 th - Traeton Nelson & Gavin Balgaard

22 nd - Grue's 150th Ann. Celebration

29 th - Noah Anderson & Finn Thompson

CONFIRMATION NEWS

This year's orientation meeting for the *youth*, of confirmation age, *parents & faith partners* will be held on Wednesday, September 11th at 7:00 pm at Peace church.

Youth will be invited to sign and bring their covenants to worship on Sunday, September 15th.

FAITH PARTNERS

A very important part of the confirmation years is developing a relationship with an experienced Christian. We invite each student to choose someone from the congregation, who will spend time with them talking and learning about the faith. We ask that each pair spend a minimum of three sessions together in a year, and the adult is asked to submit a short report of the experience.

You don't need to have all the answers, just a willingness to listen.

September Birthdays

September 1st

Richard Clemensen

September 2nd

Vikki Adams

Julie Van Santen

September 3rd

Tom Olson

September 4th

Mary Jo Beck

September 5th

Jonas Johnson

September 6th

Peggy Adams

Kristin Spangler

September 7th

Lukas Anderson

Angie Kamrath

September 8th

Jeff Driggins

September 9th

Laurie Melberg

September 11th

Derreck Hanson

Jean Wick

September 13th

Kalista Aamot

Mikayla Dahlen

Tammy Koefod

September 15th

Hayley Domek (Barry)

Norma Clemensen

Sandy Cunningham

September 16th

Caitlin Drever (Dahlen)

September 17th

Leslie Anderson

September 18th

Chelsy Moe (Ness)

September 19th

Kyra Aamot

Elli Jo Hanson (Johnsrud)

Mark Koefod

Molly Sorenson

September 20th

Roger Langlie

Aaron Olson

Tonya Stierlen

September 21st

Troy Langlie

September 22nd

Jenna Nelson

September 23rd

Taylor Birr

September 24th

Pat Lystrom

Laiken Langlie

September 25th

Randi Hockert

Jordan Lillemon

September 26th

Josey Koefod (Ness)

Weston Domek

September 27th

Lyndee Evavold

September 28th

Chase Kamrath



*If I don't have your birth date
or if I have it listed incorrectly
please call - 747-2273 / or
email - Peace@prtel.com*

Melissa R

**God's Country
News Articles
are DUE by the
15th of
each MONTH**



GRUE Bible Study:

**Tuesday, September 19th, @
1:30 pm. at Ashby Living
Center**

Peace Bible Study:

**Tuesday, September 19th,
9:30am @ Peace.**

<u>Peace</u> Sunday School Schedule Oct-Dec 2024	
†††††††††††	
Services 9:00AM / Sunday School 10:15 AM	
October 6th	SS @ 10:15 1 st Day of Sunday School – Rally Day Potluck dinner after church
October 13th	SS @ 10:15
October 20th	No SS MEA
October 27th	SS @ 10:15
November 3rd	SS @ 10:15
November 10th	SS @ 10:15
November 17th	SS @ 10:15 Practice for Christmas program begins
November 24th	No SS Thanksgiving
December 1st	SS @ 10:15
December 8th	SS @ 10:15
December 15th	Christmas Program
December 22nd	

<u>Grue</u> Sunday School Schedule Sept - Dec 2024	
Services 10:45 am / Sunday School 9:30 am	
September 15th	SS @ 9:30 1 st Day of Sunday School
September 22nd	NO SS - 150th Anniversary Celebration
September 29th	SS @ 9:30
October 6th	SS @ 9:30
October 13th	SS @ 9:30
October 20th	SS @ 9:30
October 27th	SS @ 9:30
November 3rd	SS @ 9:30
November 10th	SS @ 9:30
November 17th	SS @ 9:30
November 24th	SS @ 9:30
December 1st	SS @ 9:30
December 8th	SS @ 9:30
December 15th	SS @ 9:30
December 22nd	Christmas Program, Potluck - 5:00, Program - 6:00 pm

August 22, 2024

The Grue Bible Study met on Aug. 20th at 1:30 pm at the Ashby Living Center.

Our lesson was The Cost of Friendship, John 15: 12-16:4, to explore the personal relationship that Jesus desires to have with us and to use that relationship as a model for our relationships with others.

We enjoyed visiting with our friends at the center.

Our next lesson to study will be Lesson 6, John 16: 5-15, Secrets of the Spirit on Sept 17th at 1:30. To realize the power of the Holy Spirit that is available to us as we face the struggles and problems of life.

The drawing for the quilt is on Sunday August 25th after services, good luck everyone.

We are looking forward to our 150th Year Anniversary Celebration on Sept. 22nd with food and fellowship, with music & memories.

All are Welcome, friends, families & visitors, to our little country church on the hill.

Join us on that day and any Sunday.

Smile, God Loves You.

Bea Runningen, Sec.

Faith *Family* Friends
for these we give thanks

September Peace Welca Message

Welcome to September!

Thank you to Koefod Family for taking care of needed services for August especially the Parish Picnic. We enjoyed a delicious array of entrees, salads and desserts and fellowship with our sister parish in the cool comfort of our community room. Brenda Risbrudt is leader for September. Please consider saying yes when she calls for providing cookies and/or bars or ushering.

Our biggest fundraiser of the year is our Bazaar on Saturday, September 21. Our always popular bakery area will be back in main community room this year. We want all your donated. bakery, candies, etc. to be within eyesight as soon as guests walk downstairs. If crafts are in your wheelhouse, we will have a table for those too. Actually, something for everyone including a delicious beef stew lunch.

The following day, Sunday, 9/22, we will help celebrate Grue's 150th Anniversary.

Summer quilt drawings at Second Chance Thrift Shop went to Dianne Larson, Ashby; Karen Mostue, Fergus Falls and Dawn from the metro area. Thank you to our quilting group for providing beautiful quilts each month. If you would like a chance at one, stop into Thrift Shop and sign up.

Sister in Christ and WELCA Co President,

Janet Novak

P.S. Please check your contact information in Annual Report and WELCA handbook for accuracy. Call church office at 218-747-2273 to provide correct information.

Baskets for the Bazaar:

The past two years we have had a very successful and fun event at the fall Bazaar. The basket raffle has been one of the top fundraisers for WELCA. Thank you for all who have donated a basket in the past.

Now is the time to start thinking about baskets for the September Bazaar! Here are some examples of past baskets to give you inspiration! Themes include: beach, wine, Italian/pasta, beauty/bath, men's shave/shower, movie night, kitchen, surprise basket, seasonal decor.

Raffle tickets will be sold during the Bazaar and the drawing for each basket will take place at the end of the Bazaar.

Thank you for your creativity and generosity.

Leslie Anderson

**Don't forget to turn in your Quilt Tickets for the
Peace Fall Bazaar, drawing will be September 21st at the
Fall Bazaar. Need not be present to win!!!!**



Hi, Ashby lions will be collecting various plastic items for recycling There are recycling barrels at JC's Grocery and Viking Bank and Ashby Equity. Please bring your plastic items there. When a certain poundage is reached we will receive a free park bench. We appreciate your participation! Please see enclosed brochure! Thanks, Ashby Lions



NexTrex Recycling Challenge

How does the challenge work?

- Register on **NexTrex.com** to obtain access to the Trex Portal
- Determine a 12-month collection time period
- Collect a minimum of 1,000 lbs.
- Report recycling totals at **my.trex.com**

- Weigh, record and attached pictures
- Deliver the collected plastic film to a participating retailer (see list) for recycling

Stores prefer smaller and more frequent amounts in the provided bin. Please contact store ahead of time with larger amounts.

What does Trex provide?

- Up to three recycling bins
- Posters

What can I win?



Trex Bench

What can be recycled?

All plastic must be clean, dry and free of food residue.



Grocery bags



Bread bags



Bubble wrap



Dry cleaning bags



Newspaper sleeves



Ice bags



Plastic shipping envelopes



Ziploc & other reclosable food storage bags



Cereal bags



Case overwrap



Salt bags



Pallet wrap & stretch film



Wood pellet bags



Produce bags

Register on the website **NexTrex.com**

PEACE Council Minutes

10

Peace Church Council Meeting Minutes

8-14-2024

Members present: Tim Cunningham, Wayne Vorland, Duane Spielman, Gene Jensen, Pastor Dan, Linda Bahnson, Jody Dahlen

Opened with Devotions at the Parish Council Meeting

No Additions to the agenda

Secretary's report: M/S/C

Treasurer's report: M/S/C

Initial Endowment from the Elroy Anderson Estate has been received. M/S/C to move \$100,000 to a short-term CD. Tim will coordinate with the bank.

Pastor's report: Provided during the Parish Council meeting.

Committee Reports:

Education: No report

Christian Growth: No report

Worship: Schedule for acolyte and psalm readers was completed and will be mailed out. It was agreed that those acolyting would not be required to wear gowns. Coffee Cup Sundays will continue the second Sunday of every month.

Property Management: Still looking for someone to snowplow/shovel the church. Please let Duane know if you are interested or know of someone who it. This is a paid position.

M/S/C to adjourn

Next meeting will be Sunday, September 8th at 10:00.

Reminder that service times change in September. Church starts at 9:00.

Jody Dahlen

Church Council Secretary

GRUE Council Minutes

11

Grue Council Meeting August 14th, 2024

In attendance- Sonia Heibel, Bob Torgrimson, Char Woldahl, June Bjornson, Melissa Runningen and Sharon Hermanson.

Absent- Darlane Miller, Gwen Lillemon and Randy Koefod.

Devotions were done at Parish council meeting.

Secretary's Report- read and approved-M/S/C

Treasure's Report- read and approve- M/S/C

June renewed CD's at Viking Bank at a rate of 4.75%.

She renewed 1 for 8 months and 2 for 1 year.

Pastor's Report: vacation time requested-

October 15th thru 21st

November 9th thru 16th

Old Business:

Council voted that Grue will still be having a Ash Wednesday service. M/S/C

Kitchen progress: the new floor will be going in the week of August 19th.

Work day is scheduled for Saturday August 24th starting at 9:00 am.

Greg and Alex Lillemon took down the gutters that were coming off the back of the church. They also looked at the louvers to decide how to move forward on them.

Next council meeting will be Wednesday, September 11th @ 7:00pm.

Motion to adjourn meeting. M/S/C

Respectfully submitted,

Sharon Hermanson

Council Secretary

Be Good Friends who love deeply.

Romans 12:10

PARISH Council Minutes

12

Parish Council Meeting, August 14, 2024

In attendance: Duane Spielman, Gene Jensen, Tim Cunningham, Linda Bahnson, Wayne Vorland, Jody Dahlen, Melissa Runningen, June Bjornson, Sonia Heibel, Char Woldahl, Bob Torgimson, Sharon Hermanson and Pastor Dan.

Absent: Brenda Johnson, Darlane Miller, Gwen Lillemon and Randy Koefod.

Meeting called to order by Duane Spielman.

Devotions: Pastor Dan led us on Psalm 138.

Additions to Agenda: Parish Picnic, Thanksgiving service, Confirmation sermon notes, joint service for Grue 150th anniversary celebration and Peace WELCA serving meal at Grue celebration.

Secretary's Report: read and approved -M/S/C

Treasure's Report: reviewed and approved- M/S/C

Pastor's Report- June he had 15 visits and 6 meetings.

July he had 25 visits and 6 meetings.

Requested vacation times- Oct 15th thru the 21st

Nov. 9th thru the 16th

Old Business: No old business for discussion.

New Business: August Parish Picnic- looking at making it a 4 church event with First Presbyterian and Our Saviors. Pastor Dan will be visiting with Pastor Paul to hear his ideas on this.

Grue's 150th Anniversary service- the council voted on having it as a joint service with Peace. Service will be at 10:45am. 9:00 am coffee and treats. M/S/C

Thanksgiving Eve service- The service will be a community service on Tuesday, November 26th. Grue will be the host church.

Peace WELCA has volunteered to serve the meal for Grue's 150th anniversary. Members at Grue will prepare the meal and Peace WELCA will serve it for them. Thank you for your gracious gesture. They will be meeting with the celebration committee to talk out details.

Confirmation sermon notes- after a lengthy discussion on the amount of sermon notes required to be confirmed, the council voted that 12 sermon notes are required per year for a total of 24.
M/S/C

Motion to adjourn- M/S/C

Lord's Prayer in unison.

Next Parish council meeting will be held at Grue November 13th @ 7:00pm.

Respectfully Submitted,
Sharon Hermanson
Council Secretary

Worship Committee Meeting Minutes Aug. 4, 2024 12:00pm

Members Present: Cindy Vorland, Teresa Ohren, Candy Catoe, Brenda Risbrudt, Carol Koefod,
Pastor Dan

Members Absent:

Old Business:

Acolyte/Psalm Readers: Review 2024-2025 Schedule

Acolytes starting at 6th grade due to low numbers. Schedule approved and mailed to families.

Coffee cup Sundays: 2nd Sunday of each month for the next year. Revisit at each quarterly meeting.

Brenda will choose hymns from the red hymnal already being stored downstairs.

Group leaders will put hymnals on the tables.

New mobile speaker system here and works very well.

New Business

Questions from congregation to discuss:

Christ Candle is to be lit every Sunday. This will be discussed at acolyte training.

We will sing the Kyrie Sept.-May

Formal offerings will continue each week. Pastor shared important information regarding the offering stating that it is actually part of the worship service, not just the process of collecting money to pay the bills.

“The good news of stewardship is that church offerings are not fund-raising rituals but acts of worship in which we are invited to express our heartfelt devotion to God who is so good to us.” Electronic transfers are a great way for members to give their intended contributions for operating expenses, “But churches that do this STILL have offerings on Sunday morning. Why? Because the purpose of the Sunday morning offering is not to collect funds for covering the church’s operating expenses. The Sunday offering is a worship event that provides us with the opportunity for expressing our love for God in the purest way imaginable, by giving up something we value.”

Mark Allan Powell Giving to God: The Bible’s Good News about Living a Generous Life

II. Fall Services

Sept. Services 9:00am

Oct. Services: 9:00am

1. Confirmation Oct. 27

C. Nov. Services 9:00am

Christmas Decorating Sun Nov 24 after church.

Community Thanksgiving Service Nov. 26, hosted by First Presbyterian

III. Nov. Meeting to discuss winter services will be held:

Nov. 3, 2024 Time to be decided.

Submitted by Carol Koefod

GRUE LUTHERAN CHURCH 1874 - 2024



Grue 150th Anniversary Celebration

Join us for
Fellowship - 9 AM
Service - 10:45 AM
Dinner after service

Help spread the Word

Sept. 22, 2024
36608 Grue Church Lane NE
Battle Lake MN 56515

Let's Celebrate!

The property Grue Lutheran Church is built on was a gift from August Miller the owner of the local flour and saw mill that once sat near the intersection of CR 126 and Grue Church Road in an area known as Hoff. August Miller offered two acres and \$25 toward the building of a church. The following three men made up the building committee in 1889: John H. Peterson, Halvor Thompson and Christian Olsen Wold. In 1890, the main auditorium of the church was completed. Since then, the steeple was added in 1903 and the altar area in 1915. A basement was added in 1929. An entry was added in 1973 and replaced with the 2002 addition.

Custom Mill.

My Mill is running steady and can attend to custom grading promptly. I also have put in a new Roller Feed Mill and can do as good feed grinding as any Mill in the State.

General feed grinding, 2 sacks for 15 cents.

Pigeon Grass and Buckwheat 5 cents a sack.

**AUGUST MILLER,
Prop. Eagle Lake Mills.**

[Review, Jan. 5, 1888]

We are often asked how our church got its name. The closest we have come to finding an answer to that question are the obituaries of two members that mention that they were born at Grue Solør in Norway, Christian Olsen Wold and his wife Johanna Paulson Wold. This municipality is located northeast of Oslo and borders Sweden. They were both born and married there. They immigrated to America in 1866 and came to Otter Tail County in 1870.

Christian Olsen Wold

b. 29 JAN 1835

d. 12 SEP 1911

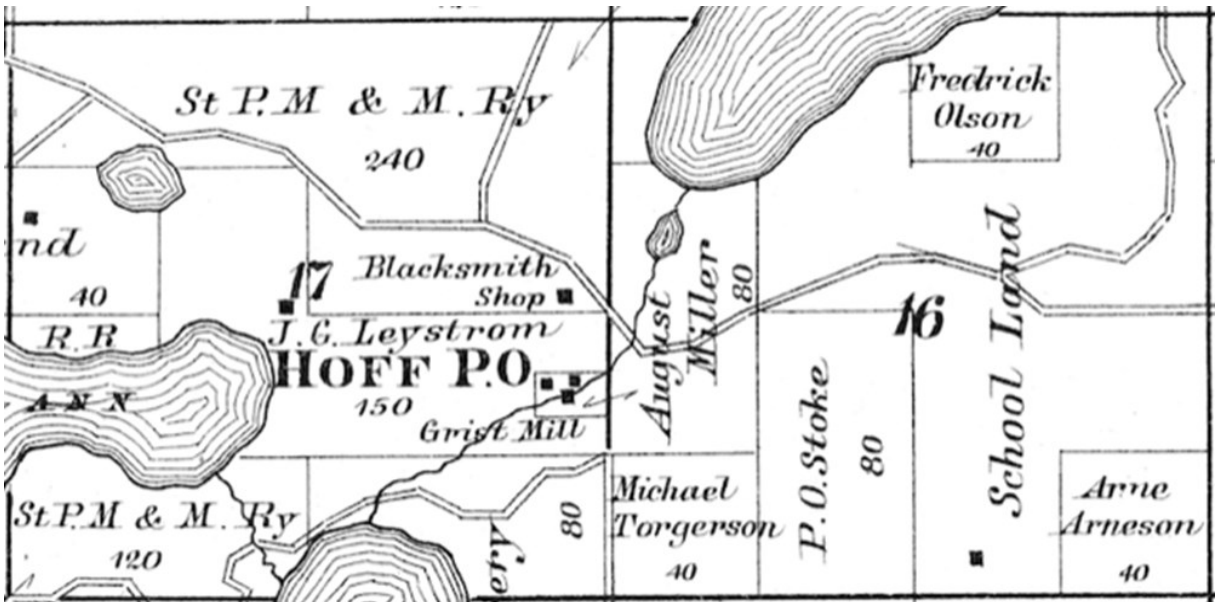
Wife: Johanna Paulson

b. 07 AUG 1842

d. 10 SEP 1919

Christian was born in Norway at Grue prestegård. They came to America in 1866 and settle in Chicago before coming to Otter Tail County in 1870. At the time of his death he was survived by his wife and eight children. Johanna's obituary says that she and her husband helped found and build Grue Lutheran Church. She left 15 grandchildren and 16 great grandchildren. Only their son William remained in Otter Tail County. He is buried at Knollwood Cemetery in Fergus Falls.

[Conflicting information from sources make most dates and name spellings up for interpretation]



September Word Search

S D J L J A E D S E L P P A C O Z T Q X M Q N
 Y A G O S Q X T R P M V J T H V M B C R J A D
 Q J P I S C N R O C A I P A E Z G U V H L S V
 J P K P I E H Q D Y Y A G T T W U O J B A X U
 N K A Y H J P O Q T K I U R G U Z V M P B O M
 Q E E T S I Z O O H V Z J T A H Y V V I O N G
 J R H R R D R C C L L C I B U T R B Q F R I Y
 D E O B M I A E K M Q C W I O M E J V F D U Y
 T J M W T W O K K D Y Y V L A P N I U X A Q H
 S E E G J R K T M O O R S S A L C O I K Y E Q
 E J W T C U A S D R E W O L F N U S T E W A E
 V W O Y X T V I Y A K W S E P T E M B E R S J
 R B R C D E X N L A Y H T X L E W P Z I T T D
 A B K F I N W E Y S P H E W G Y F N Z L U E E
 H L J Q F A L L Z E O E Q E K D T G G H F R T
 X G E Z C Q R G P B Z B F J N R E H C A E T T

September

School

Acorn

Sunflower

Classroom

Fall

Autumn

Harvest

Sapphire

Equinox

Patriot Day

Aster

Labor Day

Migrate

Homework

Apples

Trails

Teacher



We would like to update our congregations addresses so that they may continue getting "God's Country News" (Peace/Grue Newsletter), please fill out the form, and mail it to Peace Grue Parish at PO Box 157, Ashby MN 56309 or email to peace@prtel.com or put it in the mail slot in the Parish Office Manager's office door.

NAME _____

ADDRESS _____

PHONE NUMBERS _____

EMAIL ADDRESS _____

God's People in Service September 2024 Peace † Grue Lutheran					
GRUE 10:45 a.m. Late Service	September 1 Green Holy Communion	September 8 Green	September 15 Green	September 22 Green Grue 150 th Ann. Celebration	September 29 White
Janitors/Ushers	Ed & Sandy Odens, Patty Van Santen and Bob & Linda Ehlert				
Reader	Ushers	Ushers	Ushers	Ushers	
Music	Denise Juven	Denise Juven	Denise Juven	Cindy Vorland & Contemporary	Denise Juven
PEACE 9:00 a.m. Early Service	September 1 Green Holy Communion	September 8 Green Coffee Cup Sun- day	September 15 Green	September 22 Green Joint services at Grue	September 29 White
Music	Brenda Risbrudt	Brenda Risbrudt	Cindy Vorland	Brenda Risbrudt
Ushers	Wayne Risbrudt	
Acolytes	Ushers	Traeton Nelson Gavin Balgaard	Noah Anderson Finn Thompson
Readers	Cindy Vorland			
Psalm's	Ushers	Traeton Nelson	Noah Anderson
Communion Helper (set up, serve, clean)	Wayne & Cindy Vorland
Cookie Servers	Wayne & Brenda Risbrudt	Wayne & Brenda Risbrudt	Lee Peterson	
Peace Lutheran, Month of September Chairpersons: Wayne & Brenda Risbrudt *Ushers are reminded to pick up bulletins and trash and replace hymnals in racks prior to leaving the sanctuary. <u>Make sure the lights are turned off and ALL doors are locked!</u>					

Peace † Grue Lutheran Parish - September 2024

PARISH OFFICE 218-747-2273 Email peace@prtcl.com
 306 Larson Avenue, Box 157, Ashby, MN 56309 Church website: www.peacegrue.org
 PASTOR Dan Hermanson 612-877-0722 Email: dlhermanson@hotmail.com

Sunday	Monday	Tuesday	Wednesday	Thursday	Friday	Saturday
1 PEACE service 9:00 a.m. GRUE service 10:45a.m.	2 Labor Day	3	4 PQ	5	6	7
8 PEACE service 9:00 a.m. Coffee Cup Sunday GRUE service 10:45a.m. Peace Council meeting	9	10	11 Confirmation Meeting for 1 st and 2 nd years Students, Parents & Faith Partners 7:00 @ Peace Church Grue Council meeting	12	13	14
15 PEACE service 9:00 a.m. GRUE service 10:45a.m. SS 9:30 a.m.	16	17 Peace Bible Study 9:30 a.m. GRUE Bible Study 1:30 p.m.	18 PQ Confirmation 5:30 - 6:30 PM	19	20	21 Peace Fall Bazaar 10-1, lunch—11
22 Grue 150 th Anniversary Celebration Coffee & fellowship at 9 GRUE service 10:45a.m. Dinner after services	23	24	25 Confirmation 5:30 - 6:30 PM	26	27	28
29 PEACE service 9:00 a.m. GRUE service 10:45a.m. SS 9:30 a.m.	30		PEACE Church service 9:00 am GRUE Church service 10:45 am, SS 9:30 am PQ - Peace Quilting, 1 st & 3 rd Wed., at 9:00 am			



RETURN SERVICE REQUEST



Ashby MN 56309
PO Box 157
306 Larson Ave
Peace-Grue Lutheran Parish
God's Country News

PEACE † GRUE LUTHERAN PARISH

OF THE ELCA

Office 218-747-2273

E-mail peace@prtcl.com website www.peacegrue.org

Pastor Dan Hermanson 612-877-0722

Email: dlhermanson@hotmail.com

